

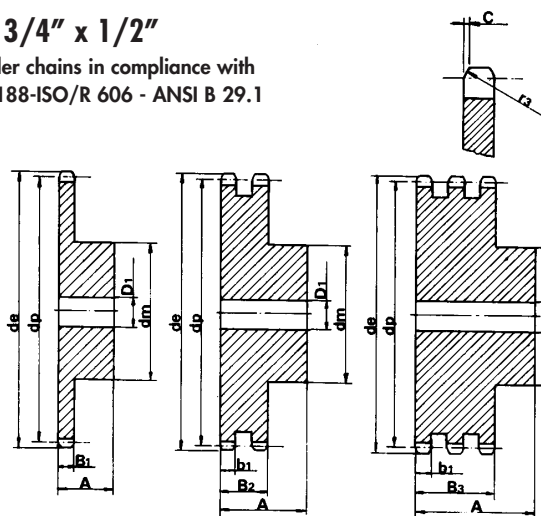
S P R O C K E T S

ASA 60

| Z | d _e | d _p | SINGLE | | | DOUBLE | | | TRIPLE | | |
|----|----------------|----------------|----------------|----------------|----|----------------|----------------|----|----------------|----------------|----|
| | | | d _m | D ₁ | A | d _m | D ₁ | A | d _m | D ₁ | A |
| 10 | 71.54 | 61.64 | 42 | 12 | 30 | 42 | 12 | 45 | | | |
| 11 | 77.51 | 67.61 | 45 | 12 | 30 | 47 | 16 | 50 | | | |
| 12 | 83.49 | 73.61 | 45 | 12 | 30 | 53 | 16 | 50 | 53 | 20 | 70 |
| 13 | 89.49 | 79.59 | 60 | 14 | 35 | 59 | 16 | 50 | 59 | 20 | 70 |
| 14 | 95.50 | 85.61 | 60 | 14 | 35 | 65 | 16 | 50 | 65 | 20 | 70 |
| 15 | 101.52 | 91.63 | 60 | 14 | 35 | 71 | 16 | 50 | 71 | 20 | 70 |
| 16 | 107.54 | 97.65 | 75 | 16 | 35 | 77 | 20 | 50 | 77 | 20 | 70 |
| 17 | 113.56 | 103.67 | 75 | 16 | 35 | 83 | 20 | 50 | 83 | 20 | 70 |
| 18 | 119.59 | 109.71 | 75 | 16 | 35 | 89 | 20 | 50 | 89 | 20 | 70 |
| 19 | 125.63 | 115.75 | 80 | 16 | 35 | 95 | 20 | 50 | 95 | 20 | 70 |
| 20 | 131.67 | 121.78 | 80 | 16 | 35 | 100 | 20 | 50 | 100 | 20 | 70 |
| 21 | 137.71 | 127.82 | 80 | 16 | 35 | 100 | 20 | 50 | 100 | 20 | 70 |
| 22 | 143.75 | 133.86 | 90 | 20 | 40 | 100 | 20 | 50 | 100 | 20 | 70 |
| 23 | 149.79 | 139.90 | 90 | 20 | 40 | 110 | 20 | 50 | 110 | 20 | 70 |
| 24 | 155.84 | 145.94 | 90 | 20 | 40 | 110 | 20 | 50 | 110 | 20 | 70 |
| 25 | 161.88 | 152.00 | 90 | 20 | 40 | 120 | 20 | 50 | 120 | 20 | 70 |
| 26 | 167.93 | 158.04 | 90 | 20 | 40 | 120 | 20 | 50 | | | |
| 27 | 173.98 | 164.09 | 90 | 20 | 40 | 120 | 20 | 50 | | | |
| 28 | 180.03 | 170.13 | 95 | 20 | 40 | 120 | 20 | 50 | | | |
| 30 | 192.14 | 182.25 | 95 | 20 | 40 | 120 | 20 | 50 | | | |

Pitch 3/4" x 1/2"

for roller chains in compliance with
DIN 8188-ISO/R 606 - ANSI B 29.1



SPROCKET

| | mm |
|-------------------------------------|-------|
| TOOTH RADIUS r ₃ | 20 |
| RADIUS WIDTH C | 2.4 |
| SPROCKET TOOTH WIDTH B ₁ | 12.0 |
| SPROCKET TOOTH WIDTH b ₁ | 11.8 |
| SPROCKET TOOTH WIDTH B ₂ | 34.60 |
| SPROCKET TOOTH WIDTH B ₃ | 57.4 |

CHAIN

| | mm |
|----------------|-------|
| PITCH | 19.05 |
| INTERNAL WIDTH | 12.7 |
| ROLLER - Ø | 11.91 |

MATERIAL: C 45 UNI 7845

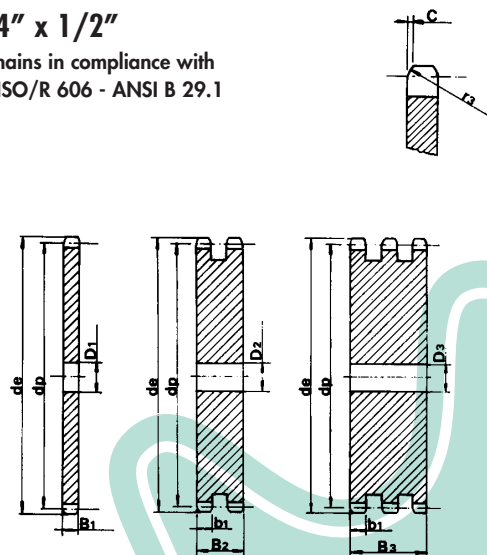
P L A T E W H E E L S

ASA 60

| Z | d _e | d _p | S D T | | |
|----|----------------|----------------|----------------|----------------|----------------|
| | | | D ₁ | D ₂ | D ₃ |
| 30 | 192.14 | 182.25 | | | 20 |
| 32 | 204.24 | 194.35 | | 20 | |
| 38 | 240.58 | 230.69 | 20 | 25 | 25 |
| 40 | 252.69 | 242.80 | 20 | 25 | |
| 45 | 282.98 | 273.09 | 25 | 25 | 25 |
| 48 | 301.16 | 291.27 | 25 | | |
| 57 | 355.70 | 345.81 | 25 | 25 | 30 |
| 76 | 470.87 | 460.98 | 30 | 30 | 30 |
| 95 | 586.06 | 576.17 | | 30 | |

Pitch 3/4" x 1/2"

for roller chains in compliance with
DIN 8188-ISO/R 606 - ANSI B 29.1



PLATEWHEEL

| | mm |
|----------------------------------|------|
| TOOTH RADIUS r ₃ | 20 |
| RADIUS WIDTH C | 2.4 |
| PLATE TOOTH WIDTH B ₁ | 12.0 |
| PLATE TOOTH WIDTH b ₁ | 11.8 |
| PLATE TOOTH WIDTH B ₂ | 34.6 |
| PLATE TOOTH WIDTH B ₃ | 57.4 |

CHAIN

| | mm |
|----------------|-------|
| PITCH | 19.05 |
| INTERNAL WIDTH | 12.7 |
| ROLLER - Ø | 11.91 |