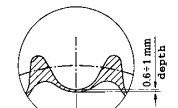
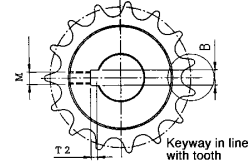
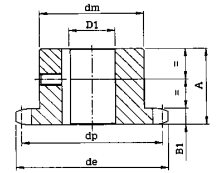


# SINGLE SPROCKETS WITH INDUCTION HARDENED TEETH WITH BORE + KEYWAY + SETSCREW HOLE

## 3/8" x 7/32" 06B-1

for roller chains in compliance with DIN 8187 ISO/R 606

z	d <sub>e</sub>	d <sub>p</sub>	d <sub>m</sub>	A	D <sub>1</sub>	B	T <sub>2</sub>	M	z	d <sub>e</sub>	d <sub>p</sub>	d <sub>m</sub>	A	D <sub>1</sub>	B	T <sub>2</sub>	M
13	43.5	39.80	28	25	12*	4	1.8 <sup>0/+0.1</sup>	4	21	67.6	63.91	48	28	19	6	2.8 <sup>0/+0.1</sup>	5
					15	5	2.3 <sup>0/+0.1</sup>	4						20	6	2.8 <sup>0/+0.1</sup>	5
					16	5	2.3 <sup>0/+0.1</sup>	4						24	8	3.3 <sup>0/+0.2</sup>	6
14	46.5	42.80	31	25	12	4	1.8 <sup>0/+0.1</sup>	4	23	73.7	69.95	52	28	19	6	2.8 <sup>0/+0.1</sup>	5
					15	5	2.3 <sup>0/+0.1</sup>	4						20	6	2.8 <sup>0/+0.1</sup>	5
					16	5	2.3 <sup>0/+0.1</sup>	4						24	8	3.3 <sup>0/+0.2</sup>	6
15	49.5	45.81	34	25	15	5	2.3 <sup>0/+0.1</sup>	4	24	76.7	72.97	54	28	19	6	2.8 <sup>0/+0.1</sup>	5
					16	5	2.3 <sup>0/+0.1</sup>	4						20	6	2.8 <sup>0/+0.1</sup>	5
					18	6	2.8 <sup>0/+0.1</sup>	5						24	8	3.3 <sup>0/+0.2</sup>	6
16	52.3	48.82	37	28	15	5	2.3 <sup>0/+0.1</sup>	4	25	79.7	76.00	57	28	19	6	2.8 <sup>0/+0.1</sup>	5
					16	5	2.3 <sup>0/+0.1</sup>	4						20	6	2.8 <sup>0/+0.1</sup>	5
					19	6	2.8 <sup>0/+0.1</sup>	5						24	8	3.3 <sup>0/+0.2</sup>	6
17	55.5	51.83	40	28	15	5	2.3 <sup>0/+0.1</sup>	4	27	85.7	82.05	60	28	19	6	2.8 <sup>0/+0.1</sup>	5
					16	5	2.3 <sup>0/+0.1</sup>	4						20	6	2.8 <sup>0/+0.1</sup>	5
					19	6	2.8 <sup>0/+0.1</sup>	5						24	8	3.3 <sup>0/+0.2</sup>	6
18	58.3	54.85	43	28	15	5	2.3 <sup>0/+0.1</sup>	4	28	94.8	91.12	60	30	19	6	2.8 <sup>0/+0.1</sup>	5
					16	5	2.3 <sup>0/+0.1</sup>	4						20	6	2.8 <sup>0/+0.1</sup>	5
					19	6	2.8 <sup>0/+0.1</sup>	5						24	8	3.3 <sup>0/+0.2</sup>	6
19	61.6	57.87	45	28	15	5	2.3 <sup>0/+0.1</sup>	4	30	94.8	91.12	60	30	19	6	2.8 <sup>0/+0.1</sup>	5
					16	5	2.3 <sup>0/+0.1</sup>	4						20	6	2.8 <sup>0/+0.1</sup>	5
					19	6	2.8 <sup>0/+0.1</sup>	5						24	8	3.3 <sup>0/+0.2</sup>	6
20	64.3	60.89	46	28	15	5	2.3 <sup>0/+0.1</sup>	4						19	6	2.8 <sup>0/+0.1</sup>	5
					16	5	2.3 <sup>0/+0.1</sup>	4						20	6	2.8 <sup>0/+0.1</sup>	5
					19	6	2.8 <sup>0/+0.1</sup>	5						24	8	3.3 <sup>0/+0.2</sup>	6



Induction hardened teeth HRC 45-53

### SPROCKET mm

SPROCKET TOOTH WIDTH B<sub>1</sub> 5.3

### CHAIN mm

PITCH 9.525  
INTERNAL WIDTH 5.72  
ROLLER - Ø 6.35

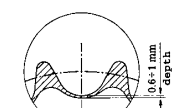
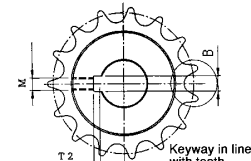
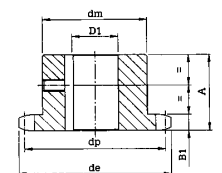
MATERIAL: C 45 UNI 1745

\* = PREPARED WITH KEYWAY AND BORE AT 90°

## 1/2" x 5/16" 08B-1

for roller chains in compliance with DIN 8187 ISO/R 606

z	d <sub>e</sub>	d <sub>p</sub>	d <sub>m</sub>	A	D <sub>1</sub>	B	T <sub>2</sub>	M	z	d <sub>e</sub>	d <sub>p</sub>	d <sub>m</sub>	A	D <sub>1</sub>	B	T <sub>2</sub>	M
12	53.9	49.07	33	28	15	5	2.3 <sup>0/+0.1</sup>	4	20	85.8	81.19	64	28	20	6	2.8 <sup>0/+0.1</sup>	5
					16	5	2.3 <sup>0/+0.1</sup>	4						24	8	3.3 <sup>0/+0.2</sup>	6
					19	6	2.8 <sup>0/+0.1</sup>	5						28	8	3.3 <sup>0/+0.2</sup>	6
					20	6	2.8 <sup>0/+0.1</sup>	5						30	8	3.3 <sup>0/+0.2</sup>	6
13	57.9	53.06	37	28	15	5	2.3 <sup>0/+0.1</sup>	4	21	90.1	85.22	68	28	20	6	2.8 <sup>0/+0.1</sup>	5
					16	5	2.3 <sup>0/+0.1</sup>	4						24	8	3.3 <sup>0/+0.2</sup>	6
					19	6	2.8 <sup>0/+0.1</sup>	5						28	8	3.3 <sup>0/+0.2</sup>	6
					20	6	2.8 <sup>0/+0.1</sup>	5						30	8	3.3 <sup>0/+0.2</sup>	6
14	61.6	57.07	41	28	15	5	2.3 <sup>0/+0.1</sup>	4	23	98.1	93.27	70	28	20	6	2.8 <sup>0/+0.1</sup>	5
					16	5	2.3 <sup>0/+0.1</sup>	4						24	8	3.3 <sup>0/+0.2</sup>	6
					19	6	2.8 <sup>0/+0.1</sup>	5						28	8	3.3 <sup>0/+0.2</sup>	6
					24	8	3.3 <sup>0/+0.2</sup>	6						30	8	3.3 <sup>0/+0.2</sup>	6
15	65.9	61.09	45	28	15	5	2.3 <sup>0/+0.1</sup>	4	24	102.1	97.29	70	28	20	6	2.8 <sup>0/+0.1</sup>	5
					16	5	2.3 <sup>0/+0.1</sup>	4						24	8	3.3 <sup>0/+0.2</sup>	6
					19	6	2.8 <sup>0/+0.1</sup>	5						28	8	3.3 <sup>0/+0.2</sup>	6
					24	8	3.3 <sup>0/+0.2</sup>	6						30	8	3.3 <sup>0/+0.2</sup>	6
16	69.5	65.1	50	28	15	5	2.3 <sup>0/+0.1</sup>	4	25	105.8	101.33	70	28	20	6	2.8 <sup>0/+0.1</sup>	5
					16	5	2.3 <sup>0/+0.1</sup>	4						24	8	3.3 <sup>0/+0.2</sup>	6
					19	6	2.8 <sup>0/+0.1</sup>	5						28	8	3.3 <sup>0/+0.2</sup>	6
					24	8	3.3 <sup>0/+0.2</sup>	6						30	8	3.3 <sup>0/+0.2</sup>	6
17	74	69.11	52	28	15	5	2.3 <sup>0/+0.1</sup>	4	27	114	109.4	70	30	20	6	2.8 <sup>0/+0.1</sup>	5
					16	5	2.3 <sup>0/+0.1</sup>	4						24	8	3.3 <sup>0/+0.2</sup>	6
					19	6	2.8 <sup>0/+0.1</sup>	5						28	8	3.3 <sup>0/+0.2</sup>	6
					24	8	3.3 <sup>0/+0.2</sup>	6						30	8	3.3 <sup>0/+0.2</sup>	6
18	77.8	73.14	56	28	15	5	2.3 <sup>0/+0.1</sup>	4	30	126.3	121.5	80	30	19	6	2.8 <sup>0/+0.1</sup>	5
					16	5	2.3 <sup>0/+0.1</sup>	4						20	6	2.8 <sup>0/+0.1</sup>	5
					19	6	2.8 <sup>0/+0.1</sup>	5						24	8	3.3 <sup>0/+0.2</sup>	6
					24	8	3.3 <sup>0/+0.2</sup>	6						28	8	3.3 <sup>0/+0.2</sup>	6
19	82	77.16	60	28	15	5	2.3 <sup>0/+0.1</sup>	4						19	6	2.8 <sup>0/+0.1</sup>	5
					16	5	2.3 <sup>0/+0.1</sup>	4						20	6	2.8 <sup>0/+0.1</sup>	5
					19	6	2.8 <sup>0/+0.1</sup>	5						24	8	3.3 <sup>0/+0.2</sup>	6
					24	8	3.3 <sup>0/+0.2</sup>	6						28	8	3.3 <sup>0/+0.2</sup>	6



Induction hardened teeth HRC 45-53

### SPROCKET mm

SPROCKET TOOTH WIDTH B<sub>1</sub> 7.2

### CHAIN mm

PITCH 12.7  
INTERNAL WIDTH 7.75  
ROLLER - Ø 8.51

MATERIAL: C 45 UNI 7845