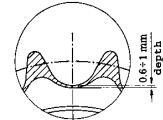
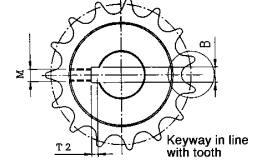
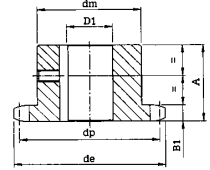


SINGLE SPROCKETS WITH INDUCTION HARDENED TEETH WITH BORE + KEYWAY + SETSCREW HOLE

1" x 17.02 16B-1

for roller chains in compliance with DIN 8187 ISO/R 606

z	d _e	d _p	d _m	A	D ₁	B	T ₂	M	z	d _e	d _p	d _m	A	D ₁	B	T ₂	M
12	109.71	98.14	69	40	25	8	3.3 ^{0/+0.2}	6	17	149.4	138.22	100	45	35	10	3.3 ^{0/+0.2}	8
					28	8	3.3 ^{0/+0.2}	6						38	10	3.3 ^{0/+0.2}	8
					30	8	3.3 ^{0/+0.2}	6						40	12	3.3 ^{0/+0.2}	10
					32	10	3.3 ^{0/+0.2}	8						45	14	3.8 ^{0/+0.2}	12
					35	10	3.3 ^{0/+0.2}	8						50	14	3.8 ^{0/+0.2}	12
13	117.2	106.14	78	40	25	8	3.3 ^{0/+0.2}	6	18	157.0	146.28	100	45	35	10	3.3 ^{0/+0.2}	8
					28	8	3.3 ^{0/+0.2}	6						38	10	3.3 ^{0/+0.2}	8
					30	8	3.3 ^{0/+0.2}	6						40	12	3.3 ^{0/+0.2}	10
					32	10	3.3 ^{0/+0.2}	8						45	14	3.8 ^{0/+0.2}	12
					35	10	3.3 ^{0/+0.2}	8						50	14	3.8 ^{0/+0.2}	12
14	125.7	114.15	84	40	25	8	3.3 ^{0/+0.2}	6	19	165.5	154.33	100	45	35	10	3.3 ^{0/+0.2}	8
					28	8	3.3 ^{0/+0.2}	6						38	10	3.3 ^{0/+0.2}	8
					30	8	3.3 ^{0/+0.2}	6						40	12	3.3 ^{0/+0.2}	10
					32	10	3.3 ^{0/+0.2}	8						45	14	3.8 ^{0/+0.2}	12
					35	10	3.3 ^{0/+0.2}	8						50	14	3.8 ^{0/+0.2}	12
					38	10	3.3 ^{0/+0.2}	8									
15	133.3	122.17	92	40	40	12	3.3 ^{0/+0.2}	10	20	173.2	162.38	100	45	35	10	3.3 ^{0/+0.2}	8
					30	8	3.3 ^{0/+0.2}	6						38	10	3.3 ^{0/+0.2}	8
					32	10	3.3 ^{0/+0.2}	8						40	12	3.3 ^{0/+0.2}	10
					35	10	3.3 ^{0/+0.2}	8						45	14	3.8 ^{0/+0.2}	12
					38	10	3.3 ^{0/+0.2}	8						50	14	3.8 ^{0/+0.2}	12
16	141.0	130.20	100	45	40	12	3.3 ^{0/+0.2}	10	21	181.6	170.43	110	50	35	10	3.3 ^{0/+0.2}	8
					30	8	3.3 ^{0/+0.2}	6						38	10	3.3 ^{0/+0.2}	8
					32	10	3.3 ^{0/+0.2}	8						40	12	3.3 ^{0/+0.2}	10
					35	10	3.3 ^{0/+0.2}	8						45	14	3.8 ^{0/+0.2}	12
					38	10	3.3 ^{0/+0.2}	8						50	14	3.8 ^{0/+0.2}	12
					40	12	3.3 ^{0/+0.2}	10									



Induction hardened teeth HRC 45-53

SPROCKET mm

SPROCKET TOOTH WIDTH B₁ 16.2

CHAIN mm

PITCH 25.4

INTERNAL WIDTH 17.02

ROLLER - Ø 15.88

MATERIAL: C 45 UNI 7845