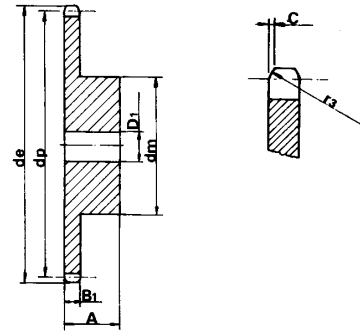


S P R O C K E T S

1/4" x 1/8"

for roller chains in compliance with DIN 8188 ASA 25 ISO/R 606 - ANSI B 29.1



SPROCKET mm

TOOTH RADIUS r_3	6.4
RADIUS WIDTH C	0.7
SPROCKET TOOTH WIDTH B_1	2.9

CHAIN mm

PITCH	6.35
INTERNAL WIDTH	3.18
ROLLER - \varnothing	3.3

MATERIAL: C 45 UNI 7847

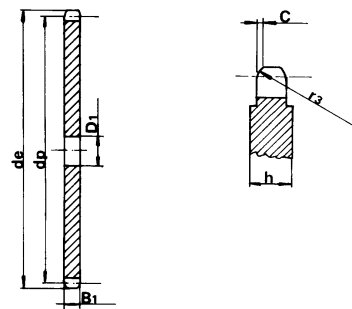
Z	d_e	d_p	SINGLE		
			d_m	D1	A
8	19.4	16.58	10	6	12
9	21.4	18.56	11.5	6	12
10	23.3	20.55	13	6	12
11	25.3	22.54	15	8	13
12	27.3	24.53	17	8	13
13	29.3	26.53	17	8	13
14	31.3	28.53	17	8	13
15	33.3	30.53	20	8	13
16	35.3	32.55	22	8	14
17	37.3	34.55	22	8	14
18	39.4	36.56	25	8	14
19	41.4	38.58	25	8	14
20	43.4	40.58	25	8	14
21	45.4	42.60	30	8	14
22	47.4	44.62	30	8	14
23	49.4	46.63	30	8	14
24	51.4	48.64	30	8	14
25	53.5	50.66	30	8	14
26	55.5	52.67	30	8	16
27	57.5	54.69	30	8	16
28	59.5	56.71	30	8	16
29	61.5	58.73	30	8	16
30	63.6	60.75	30	8	16
31	65.6	62.76	30	8	16
32	67.6	64.78	30	8	16
33	69.6	66.80	30	8	16
34	71.6	68.82	30	8	16
35	73.6	70.84	30	8	16
36	75.6	72.85	30	8	16
37	77.7	74.87	30	8	16
38	79.7	76.89	30	8	16
39	81.7	78.91	30	8	16
40	83.7	80.93	30	8	16

P L A T E W H E E L S

1/4" x 1/8"

for roller chains in compliance with DIN 8188 ASA 25 ISO/R 606 - ANSI B 29.1

The wheel disc size is increased by $h = 4\text{mm}$ starting from Z.51



PLATEWHEEL mm

TOOTH RADIUS r_3	6.4
RADIUS WIDTH C	0.7
PLATE TOOTH WIDTH B_1	2.9

CHAIN mm

PITCH	6.35
INTERNAL WIDTH	3.18
ROLLER - \varnothing	3.3

Z	d_e	d_p	S				
			D_1	Z	d_e	d_p	D_1
8	19.4	16.58	6	44	91.8	89.01	10
9	21.4	18.56	6	45	93.8	91.03	10
10	23.3	20.55	6	46	95.8	93.05	10
11	25.3	22.54	8	47	97.9	95.07	10
12	27.3	24.53	8	48	99.9	97.09	10
13	29.3	26.53	8	49	101.9	99.10	10
14	31.3	28.53	8	50	103.9	101.13	10
15	33.3	30.53	8	51	105.9	103.14	12
16	35.3	32.55	8	52	108.0	105.16	12
17	37.3	34.55	8	53	110.0	107.18	12
18	39.4	36.56	8	54	112.0	109.18	12
19	41.4	38.58	8	55	114.0	111.23	12
20	43.4	40.58	8	56	116.0	113.25	12
21	45.4	42.60	8	57	118.1	115.27	12
22	47.4	44.62	8	58	120.1	117.29	12
23	49.4	46.63	8	59	122.1	119.31	12
24	51.4	48.64	8	60	124.1	121.32	12
25	53.5	50.66	8	62	128.2	125.37	12
26	55.5	52.67	8	64	132.2	129.41	12
27	57.5	54.69	8	65	134.2	131.43	12
28	59.5	56.71	8	66	136.2	133.45	14
29	61.5	58.73	8	68	140.3	137.49	14
30	63.6	60.75	8	70	144.3	141.53	14
31	65.6	62.76	10	72	148.4	145.58	14
32	67.6	64.78	10	75	154.4	151.63	14
33	69.6	66.80	10	76	156.5	153.66	14
34	71.6	68.82	10	78	160.5	157.70	16
35	73.6	70.84	10	80	164.5	161.74	16
36	75.6	72.85	10	85	174.6	171.85	16
37	77.7	74.87	10	90	184.7	181.95	16
38	79.7	76.89	10	95	194.8	192.05	16
39	81.7	78.91	10	100	204.9	202.15	16
40	83.7	80.93	10	110	225.1	222.37	16
41	85.7	82.95	10	114	233.2	230.45	16
42	87.8	84.97	10	120	245.4	242.58	16
43	89.8	86.98	10	125	255.5	252.68	16