

S P R O C K E T S

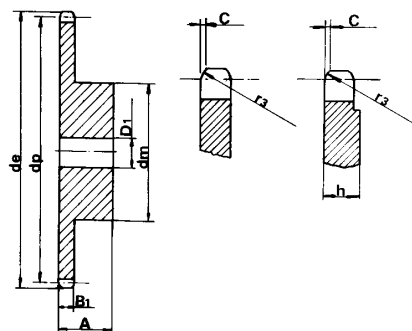
SINGLE

| Z | d _e | d _p | d _m | D ₁ | A |
|----|----------------|----------------|----------------|----------------|----|
| 8 | 37.2 | 33.18 | 21 | 8 | 14 |
| 9 | 41.5 | 37.13 | 25 | 8 | 14 |
| 10 | 46.2 | 41.10 | 28 | 8 | 14 |
| 11 | 49.6 | 45.07 | 31 | 8 | 16 |
| 12 | 53.9 | 49.07 | 35 | 8 | 16 |
| 13 | 58.4 | 53.06 | 39 | 8 | 16 |
| 14 | 62.8 | 57.07 | 43 | 8 | 16 |
| 15 | 66.8 | 61.09 | 47 | 8 | 16 |
| 16 | 70.9 | 65.10 | 50 | 10 | 18 |
| 17 | 74.9 | 69.11 | 50 | 10 | 18 |
| 18 | 78.9 | 73.14 | 50 | 10 | 18 |
| 19 | 82.9 | 77.16 | 50 | 10 | 18 |
| 20 | 86.9 | 81.19 | 50 | 10 | 18 |
| 21 | 91.0 | 85.22 | 60 | 12 | 20 |
| 22 | 95.0 | 89.24 | 60 | 12 | 20 |
| 23 | 99.0 | 93.27 | 60 | 12 | 20 |
| 24 | 103.0 | 97.29 | 60 | 12 | 20 |
| 25 | 107.1 | 101.33 | 60 | 12 | 20 |
| 26 | 111.2 | 105.36 | 70 | 16 | 20 |
| 27 | 115.4 | 109.40 | 70 | 16 | 20 |
| 28 | 119.4 | 113.42 | 70 | 16 | 20 |
| 29 | 123.4 | 117.46 | 70 | 16 | 20 |
| 30 | 127.5 | 121.50 | 70 | 16 | 20 |
| 31 | 131.5 | 125.54 | 70 | 16 | 20 |
| 32 | 135.5 | 129.56 | 70 | 16 | 20 |
| 33 | 139.6 | 133.60 | 70 | 16 | 20 |
| 34 | 143.6 | 137.64 | 70 | 16 | 20 |
| 35 | 147.6 | 141.68 | 70 | 16 | 20 |
| 36 | 151.7 | 145.72 | 70 | 16 | 25 |
| 37 | 155.7 | 149.76 | 70 | 16 | 25 |
| 38 | 159.8 | 153.80 | 70 | 16 | 25 |
| 39 | 163.8 | 157.83 | 70 | 16 | 25 |
| 40 | 167.8 | 161.87 | 70 | 16 | 25 |

1/2" x 1/8"

for roller chains in compliance with DIN 8187 ISO/R 606

The wheel disc size is increased by h = 5mm starting from Z.31



SPROCKET

mm

| | |
|-------------------------------------|-----|
| TOOTH RADIUS r ₃ | 13 |
| RADIUS WIDTH C | 1.0 |
| SPROCKET TOOTH WIDTH B ₁ | 3 |

CHAIN

mm

| | |
|----------------|------|
| PITCH | 12.7 |
| INTERNAL WIDTH | 3.3 |
| ROLLER - Ø | 7.75 |

MATERIAL: C 45 UNI 7847

P L A T E W H E E L S

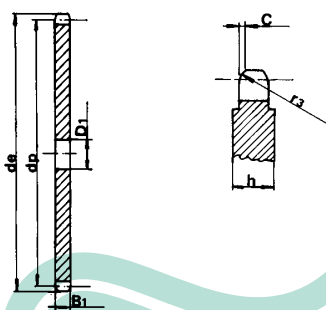
S

| Z | d _e | d _p | D ₁ | Z | d _e | d _p | D ₁ |
|----|----------------|----------------|----------------|-----|----------------|----------------|----------------|
| 8 | 37.2 | 33.18 | 8 | 43 | 179.5 | 173.99 | 16 |
| 9 | 41.5 | 37.13 | 8 | 44 | 183.5 | 178.03 | 16 |
| 10 | 46.2 | 41.10 | 8 | 45 | 187.5 | 182.07 | 16 |
| 11 | 49.6 | 45.07 | 8 | 46 | 191.6 | 186.10 | 20 |
| 12 | 53.9 | 49.07 | 8 | 47 | 195.6 | 190.14 | 20 |
| 13 | 58.4 | 53.06 | 8 | 48 | 199.7 | 194.18 | 20 |
| 14 | 62.8 | 57.07 | 8 | 49 | 203.7 | 198.22 | 20 |
| 15 | 66.8 | 61.09 | 8 | 50 | 207.8 | 202.26 | 20 |
| 16 | 70.9 | 65.10 | 10 | 51 | 211.8 | 206.30 | 20 |
| 17 | 74.9 | 69.11 | 10 | 52 | 215.9 | 210.34 | 20 |
| 18 | 78.9 | 73.14 | 10 | 53 | 219.9 | 214.37 | 20 |
| 19 | 82.9 | 77.16 | 10 | 54 | 224.0 | 218.43 | 20 |
| 20 | 86.9 | 81.19 | 10 | 55 | 228.0 | 222.46 | 20 |
| 21 | 91.0 | 85.22 | 10 | 56 | 232.1 | 226.50 | 20 |
| 22 | 95.0 | 89.24 | 10 | 57 | 236.1 | 230.54 | 20 |
| 23 | 99.0 | 93.27 | 10 | 58 | 240.2 | 234.58 | 20 |
| 24 | 103.0 | 97.29 | 10 | 59 | 244.2 | 238.62 | 20 |
| 25 | 107.1 | 101.33 | 10 | 60 | 248.2 | 242.66 | 20 |
| 26 | 111.2 | 105.36 | 12 | 62 | 256.7 | 250.75 | 20 |
| 27 | 115.4 | 109.40 | 12 | 64 | 264.8 | 258.82 | 20 |
| 28 | 119.4 | 113.42 | 12 | 65 | 268.8 | 262.86 | 20 |
| 29 | 123.4 | 117.46 | 12 | 66 | 272.9 | 268.90 | 25 |
| 30 | 127.5 | 121.50 | 12 | 68 | 280.9 | 274.99 | 25 |
| 31 | 131.5 | 125.54 | 12 | 70 | 289.0 | 283.07 | 25 |
| 32 | 135.5 | 129.56 | 12 | 72 | 297.1 | 291.16 | 25 |
| 33 | 139.6 | 133.60 | 12 | 76 | 313.3 | 307.33 | 25 |
| 34 | 143.6 | 137.64 | 12 | 78 | 321.4 | 315.40 | 25 |
| 35 | 147.6 | 141.68 | 12 | 80 | 329.4 | 323.48 | 25 |
| 36 | 151.7 | 145.72 | 16 | 85 | 349.7 | 343.70 | 25 |
| 37 | 155.7 | 149.76 | 16 | 90 | 369.9 | 363.90 | 25 |
| 38 | 159.8 | 153.80 | 16 | 95 | 390.1 | 384.10 | 25 |
| 39 | 163.8 | 157.83 | 16 | 100 | 410.3 | 404.31 | 25 |
| 40 | 167.8 | 161.87 | 16 | 110 | 450.7 | 444.74 | 25 |
| 41 | 171.4 | 165.91 | 16 | 114 | 466.9 | 460.90 | 25 |
| 42 | 175.4 | 169.95 | 16 | 120 | 491.2 | 485.16 | 25 |
| | | | | 125 | 511.4 | 505.37 | 25 |

1/2" x 1/8"

for roller chains in compliance with DIN 8187 ISO/R 606

The wheel disc size is increased by h = 4mm starting from Z.30
The wheel disc size is increased by h = 6mm starting from Z.90



PLATEWHEEL

mm

| | |
|----------------------------------|-----|
| TOOTH RADIUS r ₃ | 13 |
| RADIUS WIDTH C | 1.0 |
| PLATE TOOTH WIDTH B ₁ | 3 |

CHAIN

mm

| | |
|----------------|------|
| PITCH | 12.7 |
| INTERNAL WIDTH | 3.3 |
| ROLLER - Ø | 7.75 |