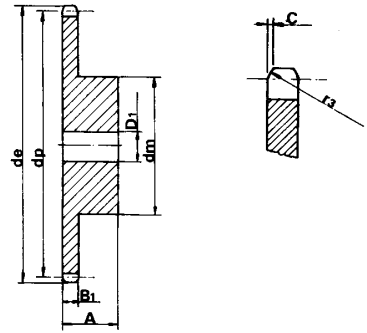


S P R O C K E T S

1/2" x 1/4" – 8.51 roller size

for roller chains in compliance with DIN 8187 ISO/R 606



Z	d _e	d _p	SINGLE		
			d _m	D ₁	A
8	37.2	33.18	20	10	25
9	41.0	37.13	24	10	25
10	45.2	41.10	26	10	25
11	48.7	45.07	29	10	25
12	53.0	49.07	33	10	28
13	57.4	53.06	37	10	28
14	61.8	57.07	41	10	28
15	65.5	61.09	45	10	28
16	69.5	65.10	50	12	28
17	73.6	69.11	52	12	28
18	77.8	73.14	56	12	28
19	81.7	77.16	60	12	28
20	85.8	81.19	64	12	28
21	89.7	85.22	68	14	28
22	93.8	89.24	70	14	28
23	98.2	93.27	70	14	28
24	101.8	97.29	70	14	28
25	105.8	101.33	70	14	28
26	110.0	105.36	70	16	30
27	114.0	109.40	70	16	30
28	118.0	113.42	70	16	30
29	122.0	117.46	80	16	30
30	126.1	121.50	80	16	30
31	130.2	125.54	90	16	30
32	134.3	129.56	90	16	30
33	138.4	133.60	90	16	30
34	142.6	137.64	90	16	30
35	146.7	141.68	90	16	30
36	151.0	145.72	90	16	35
37	154.6	149.76	90	16	35
38	158.6	153.80	90	16	35
39	162.7	157.83	90	16	35
40	166.8	161.87	90	16	35

Sprocket sizes subject to availability

SPROCKET

mm

TOOTH RADIUS r ₃	13
RADIUS WIDTH C	1.3
SPROCKET TOOTH WIDTH B ₁	5.9

CHAIN

mm

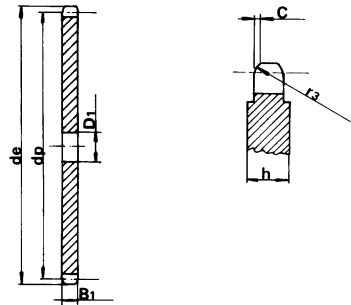
PITCH	12.7
INTERNAL WIDTH	6.4
ROLLER - Ø	8.51

MATERIAL: C 45 UNI 7847

P L A T E W H E E L S

1/2" x 1/4" – 8.51 roller size

for roller chains in compliance with DIN 8187 ISO/R 606



Z	d _e	d _p	S		Z	d _e	d _p	S	
			D ₁					D ₁	
8	37.2	33.18	8		43	179.7	173.99	16	
9	41.0	37.13	8		44	183.8	178.03	16	
10	45.2	41.10	8		45	188.0	182.07	16	
11	48.7	45.07	8		46	192.1	186.10	20	
12	53.0	49.07	8		47	196.2	190.14	20	
13	57.4	53.06	8		48	200.3	194.18	20	
14	61.8	57.07	8		49	204.3	198.22	20	
15	65.5	61.09	8		50	208.3	202.26	20	
16	69.5	65.10	10		51	212.1	206.30	20	
17	73.6	69.11	10		52	216.1	210.34	20	
18	77.8	73.14	10		53	220.2	214.37	20	
19	81.7	77.16	10		54	224.1	218.43	20	
20	85.8	81.19	10		55	228.1	222.46	20	
21	89.7	85.22	10		56	232.2	226.50	20	
22	93.8	89.24	10		57	236.4	230.54	20	
23	98.2	93.27	10		58	240.5	234.58	20	
24	101.8	97.29	10		59	244.5	238.62	20	
25	105.8	101.33	10		60	248.6	242.66	20	
26	110.0	105.36	12		62	256.9	250.75	20	
27	114.0	109.40	12		64	265.1	258.82	20	
28	118.0	113.42	12		65	269.0	262.86	20	
29	122.0	117.46	12		66	273.0	266.90	25	
30	126.1	121.50	12		68	281.0	274.99	25	
31	130.2	125.54	12		70	289.0	283.07	25	
32	134.2	129.56	12		72	297.2	291.16	25	
33	138.4	133.60	12		76	313.3	307.33	25	
34	142.6	137.64	12		78	321.4	315.40	25	
35	146.7	141.68	12		80	329.4	323.48	25	
36	151.0	145.72	16		85	349.0	343.70	25	
37	154.6	149.76	16		90	369.9	363.90	25	
38	158.6	153.80	16		95	390.1	384.10	25	
39	162.7	157.83	16		100	410.3	404.31	25	
40	166.8	161.87	16		110	450.7	444.74	25	
41	171.4	165.91	16		114	466.9	460.90	25	
42	175.4	169.95	16		120	491.2	485.16	25	
					125	511.3	505.37	25	

Sprocket sizes subject to availability

PLATEWHEEL

mm

TOOTH RADIUS r ₃	13
RADIUS WIDTH C	1.3
PLATE TOOTH WIDTH B ₁	5.9

CHAIN

mm

PITCH	12.7
INTERNAL WIDTH	6.4
ROLLER - Ø	8.51